



RESIDENTES



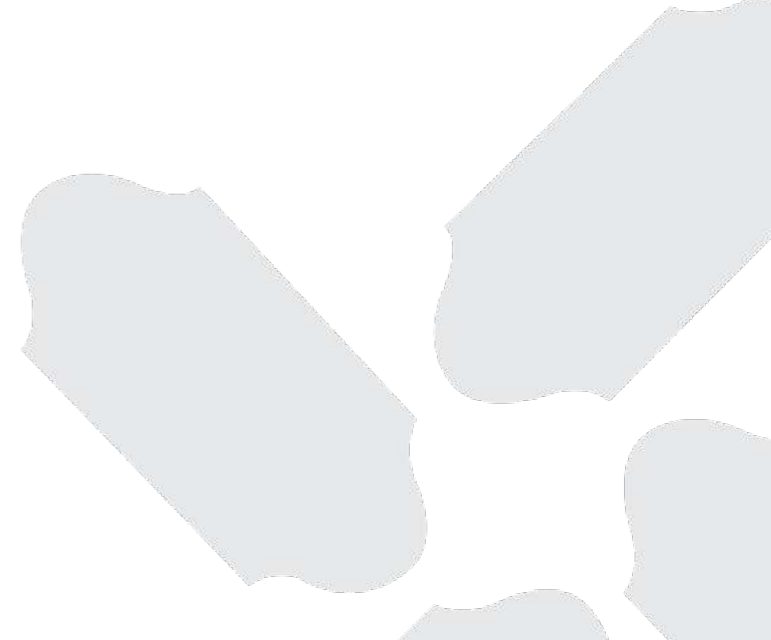
SANTAMARIA

BY LEMANCORE



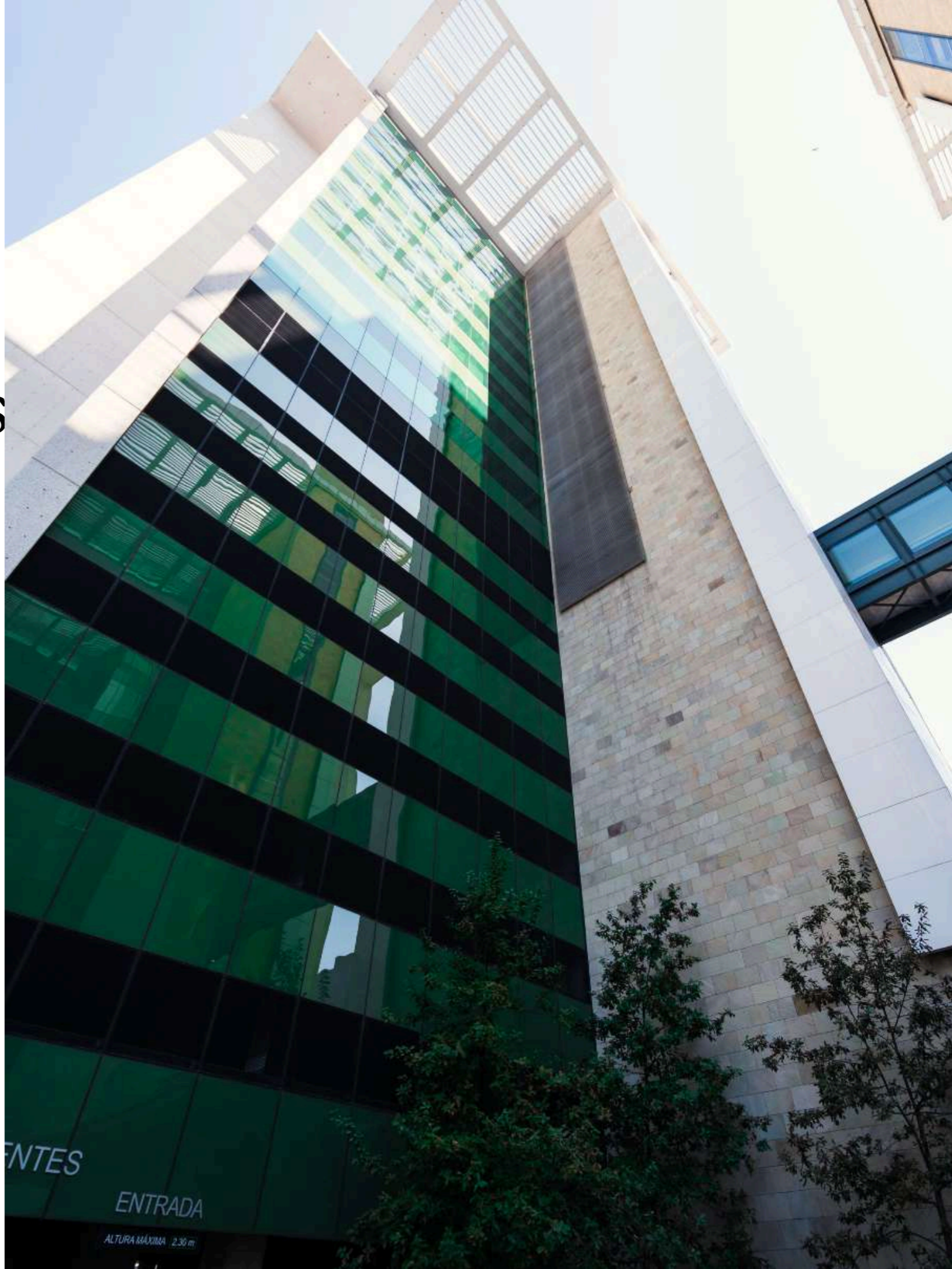
CAMPUS life

- Seguridad 24/7**
- Accesos controlados**
- Green Building**
- Business center**
- Restaurantes y amenidades**
- Atención y mantenimiento**
- Vistas panorámicas**
- Múltiples niveles de estacionamiento**



BUSINESS campus

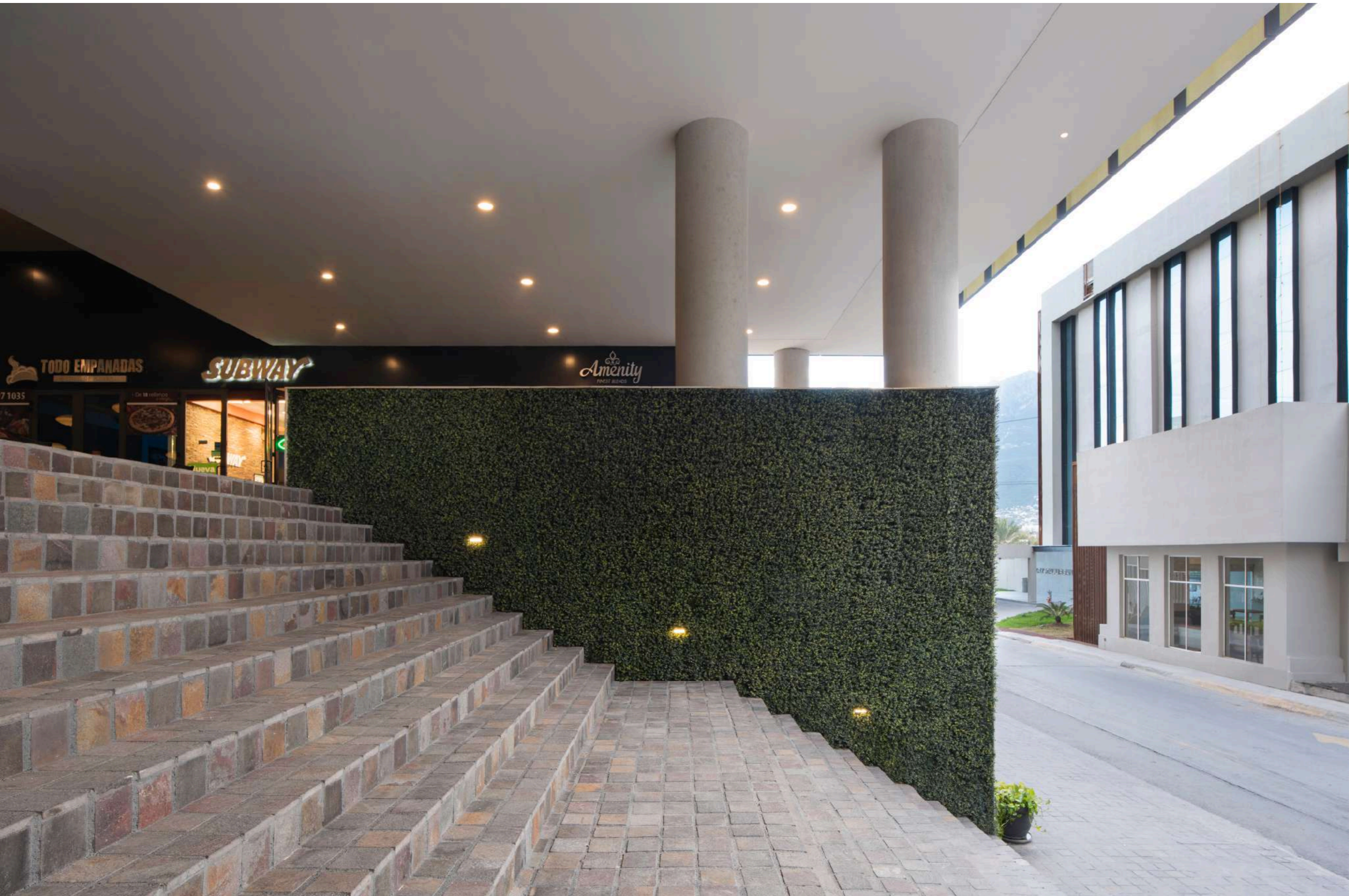
**Más de 70,000²m de oficinas,
distribuidos en un campus
empresarial de 6 torres**



The image shows a modern dining area with several tables and chairs. The room is lit by several large, white, ribbed pendant lights hanging from the ceiling. A large window in the background shows a view of trees and a building. The text "AMENIDADES" is overlaid on the right side of the image. The text "SANTA MARÍA" is visible on the window in the background.

AMENIDADES

Consultorio médico
Restaurantes y cafés
Tiendas de conveniencia
Salón de eventos
Gimnasio
Hotel
Banco









**PASEO
SANTAMARIA**

**Metros: 54 m2
Estacionamiento: 2
Acabado: Acondicionado**





¡NUEVAS!

- HAWAIIANA BURGER
Fish/Chicken
- NORTEÑA BURGER
Arrachera

5

PERSONAS
A LA VEZ
POR FAVOR



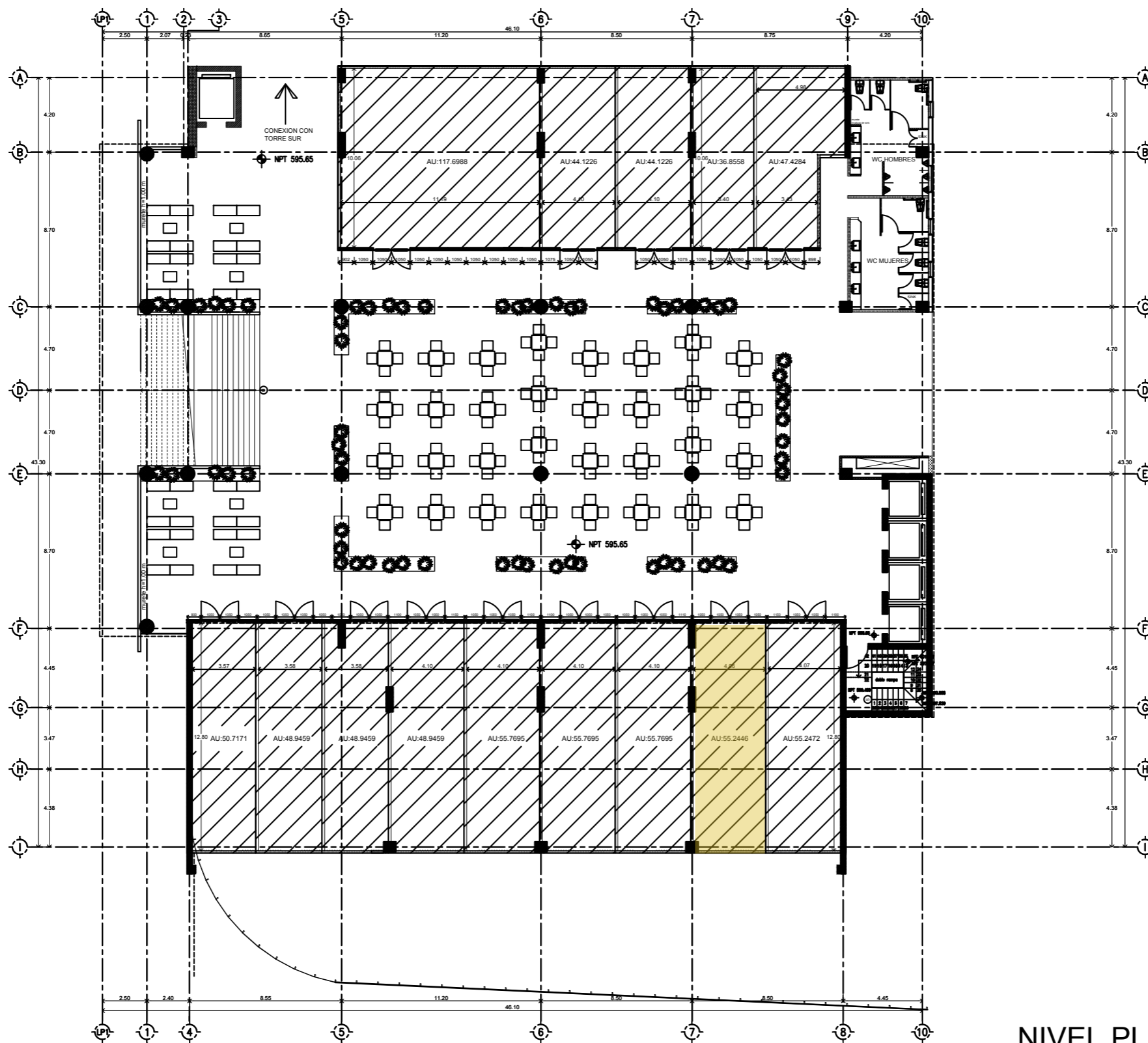






SANTA MARÍA

PLANTA



NIVEL PLAZA 02



SANTAMARIA
BY LEMANCORE

T. 81 8368 5070

www.corporativosantamaria.mx

info@lemancore.mx