



# HELICON

BY LEMANCORE



HELICON

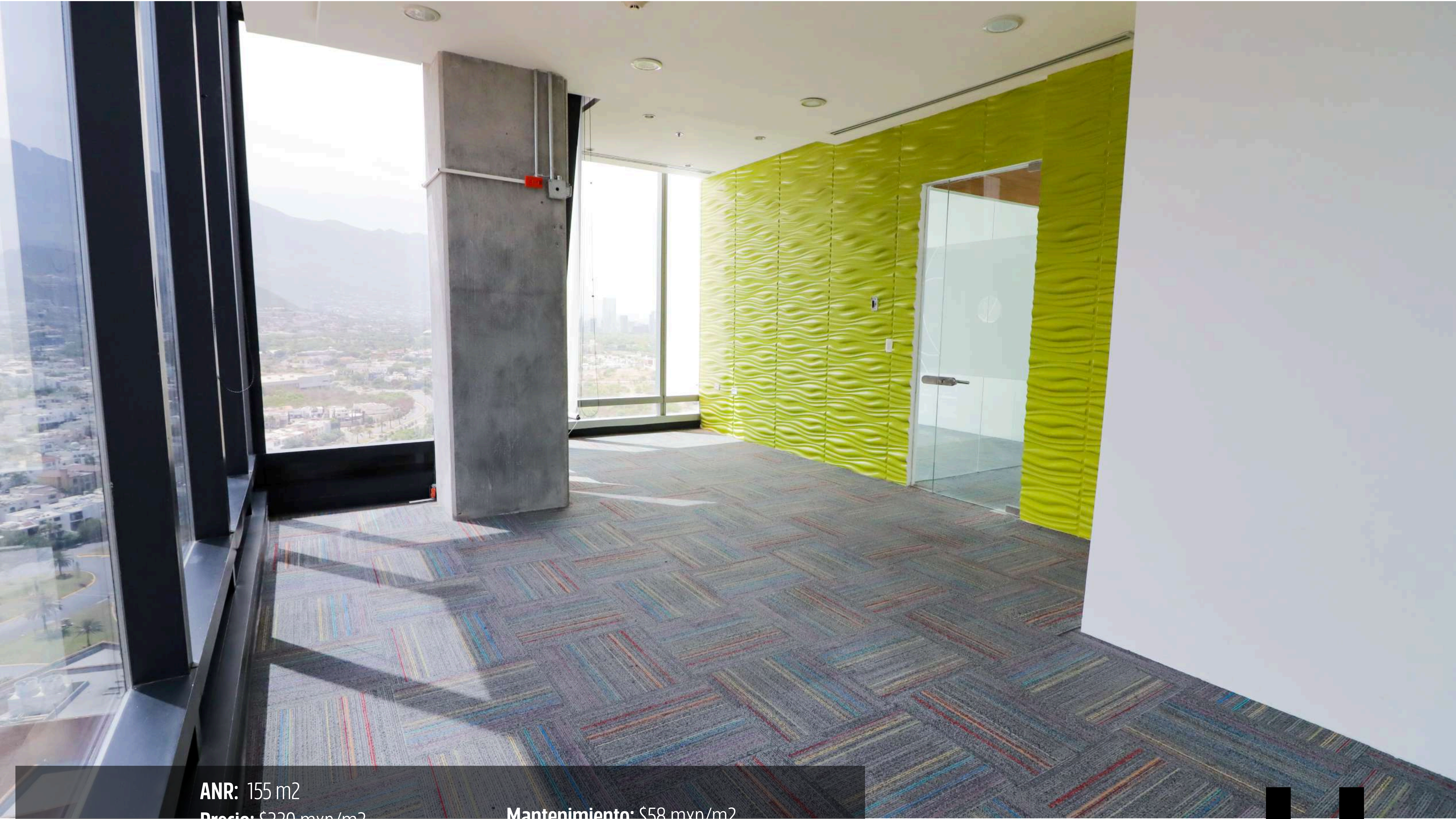




**Business Center – Salas de juntas– Salón de eventos – Vistas panorámicas– Diseño y tecnología – Seguridad 24-7–  
Cafetería – Niveles de estacionamiento – Terrazas**

**HELICON**  
BY LEMANCORE

[www.helicontower.mx](http://www.helicontower.mx)  
Jose Clemente Orozco 329, Zona Valle Oriente, 66278 Monterrey, N.L.



## NIVEL 29

**ANR:** 155 m<sup>2</sup>

**Precio:** \$320 mxp/m<sup>2</sup>

**Estacionamiento:** 6 cajones en pool

**Disponibilidad:** Inmediata

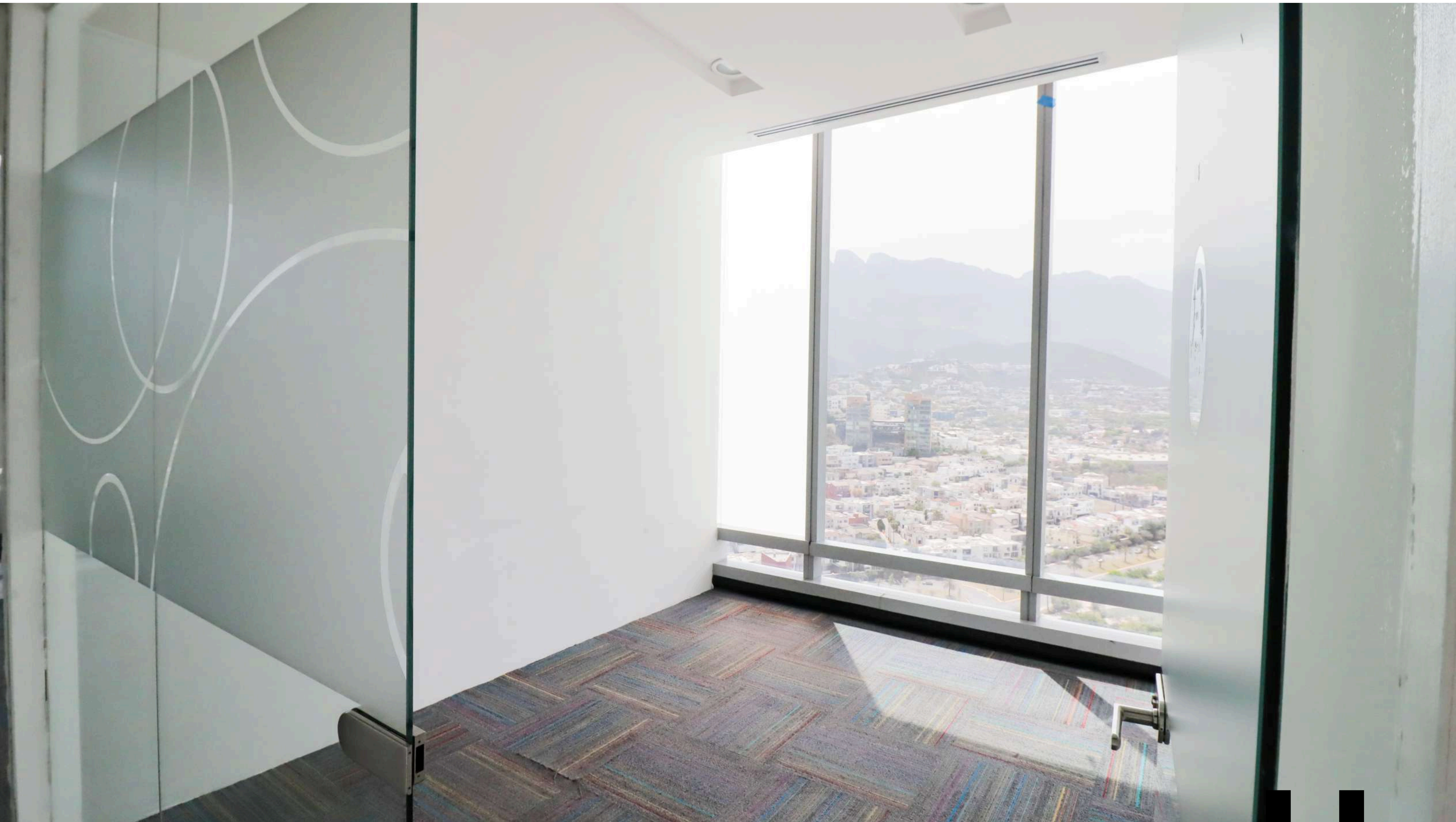
**Mantenimiento:** \$58 mxp/m<sup>2</sup>

**Business center:** 4 horas mensuales

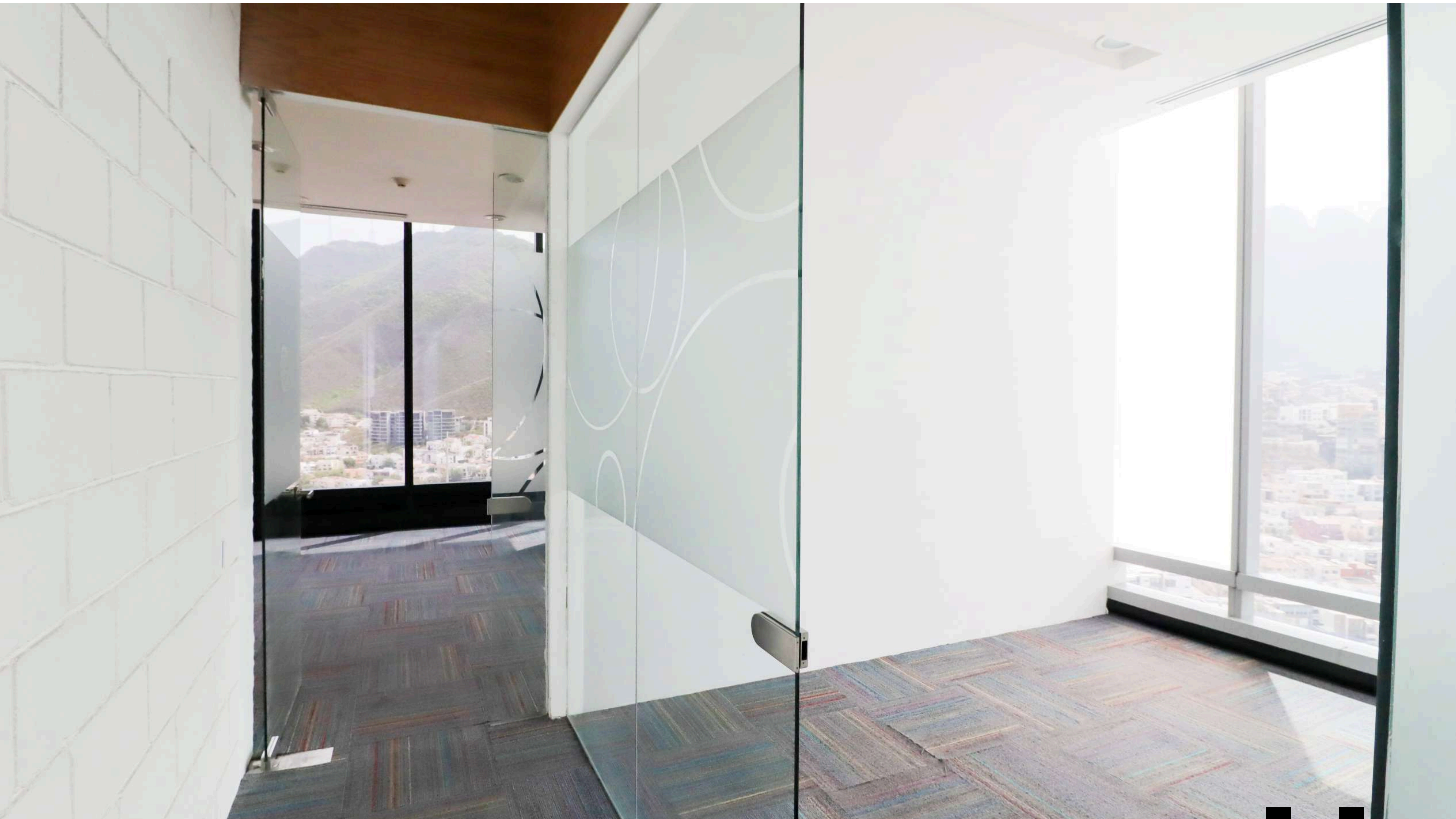
# H.



**A.**



**H.**



**H.**

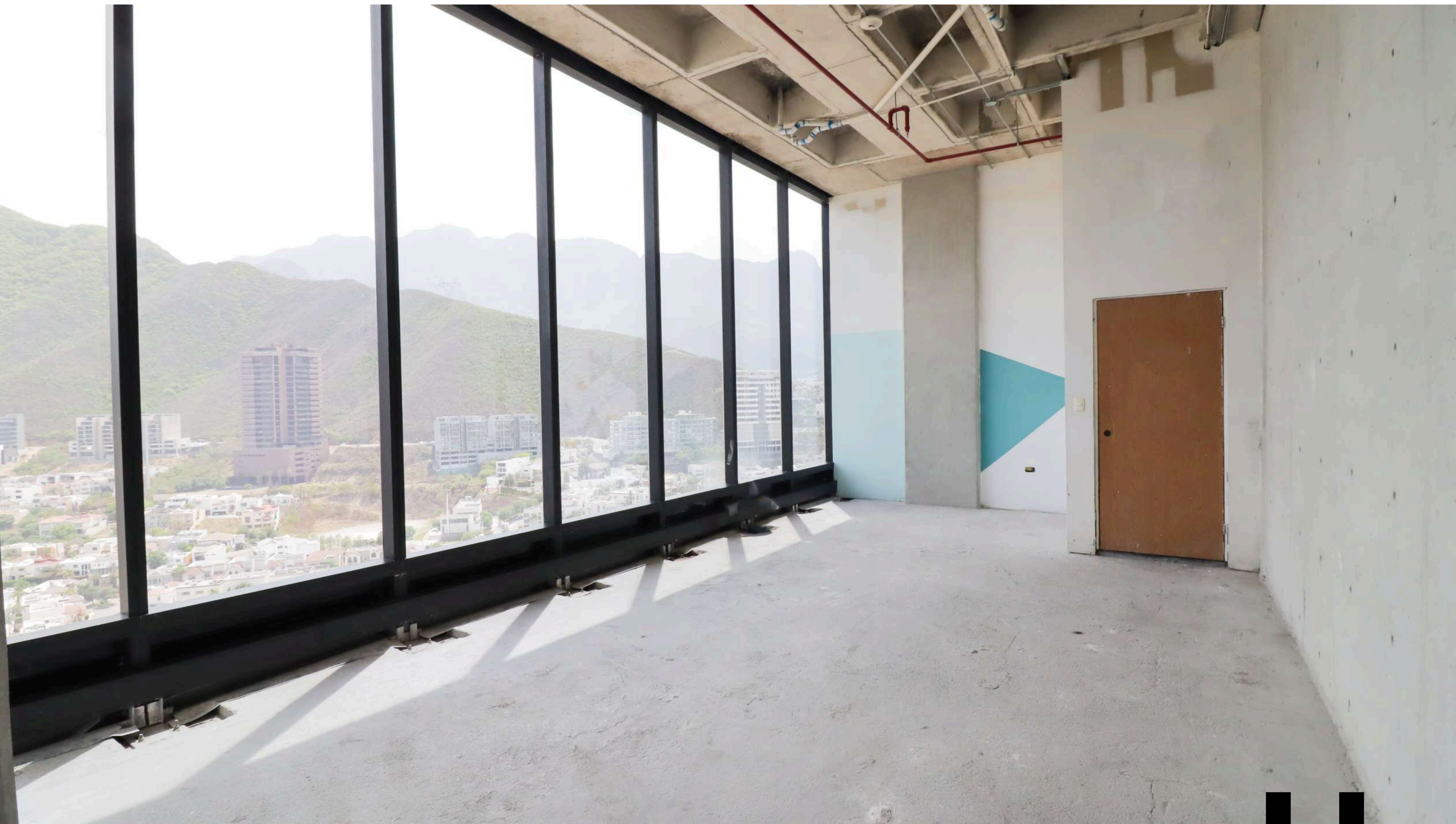


**H.**





**A.**



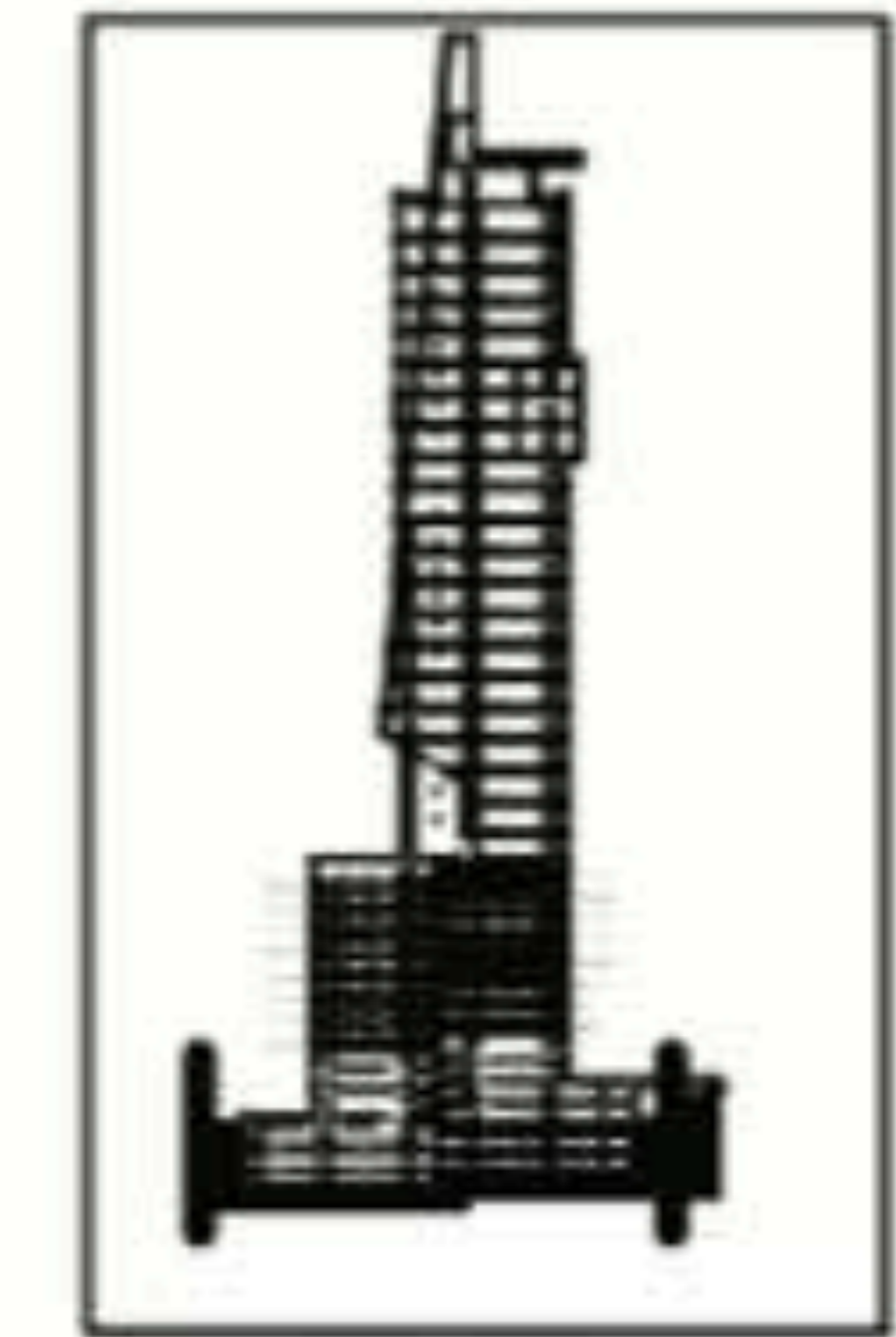
**H.**



**H.**

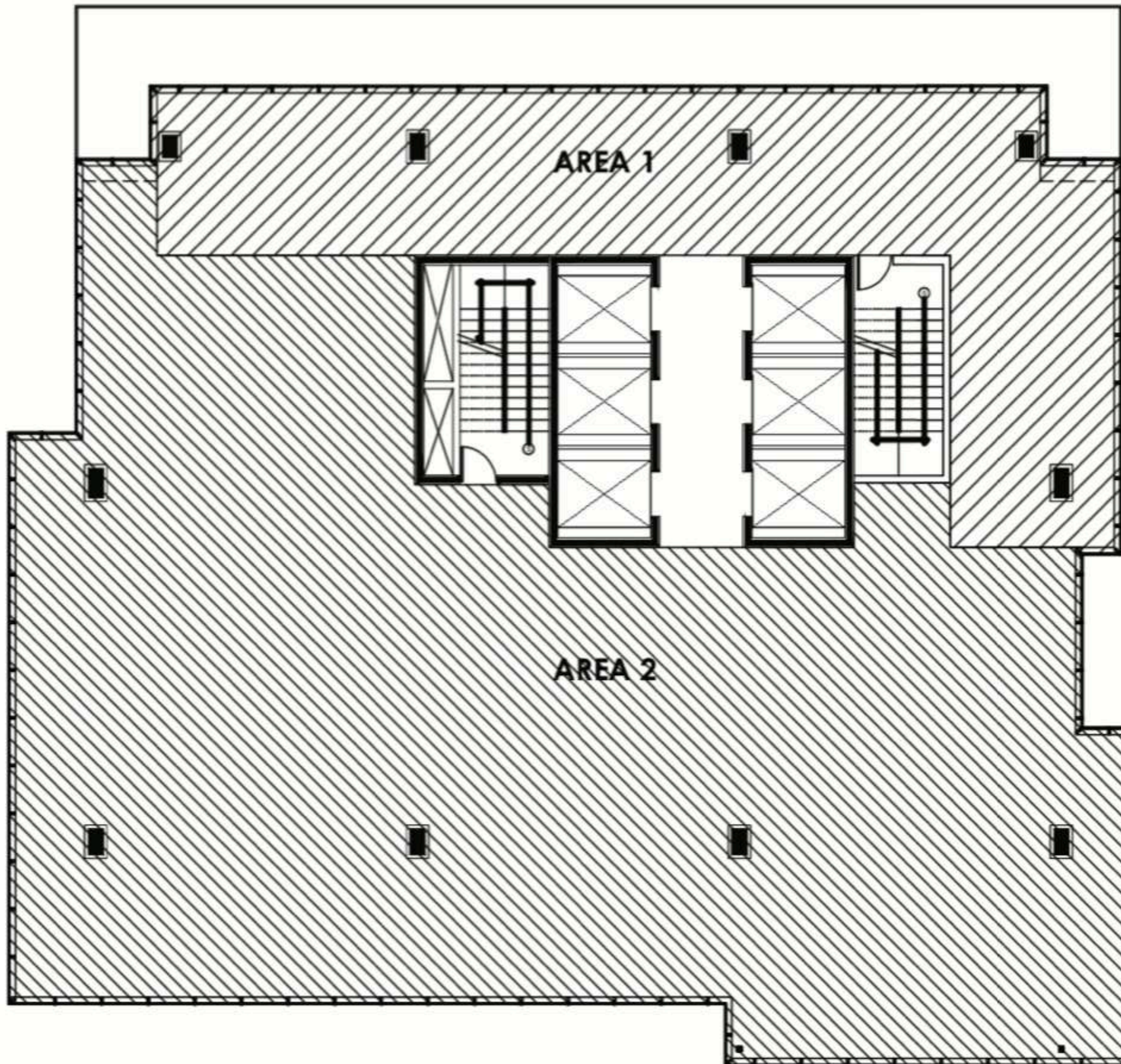
# Torre HELICON

(Piso 29)



CORTE DE REFERENCIA

CUADRO DE AREAS	
<b>AREA 1</b>	
ANR =	155 m <sup>2</sup>
ANU =	151 m <sup>2</sup>
<b>AREA 2</b>	
ANR =	493 m <sup>2</sup>
ANU =	479 m <sup>2</sup>
A. CIRC. =	18 m <sup>2</sup>
CIR. VERT. =	86 m <sup>2</sup>
EFF =	97.25%





# H.

T. 83685070

[info@lemancore.mx](mailto:info@lemancore.mx)

[www.helicontower.mx](http://www.helicontower.mx)

Jose Clemente Orozco 329, Zona Valle Oriente,  
66278 Monterrey, N.L.