

LEMAN
CORE

LEASE
MANAGEMENT
CORPORATE
REAL ESTATE

GROUNDWORK

by Lemancore

GROUNDWORK



GROUNDWORK





GROUNDWORK

Nivel 9-1

Metros: 134 m²

Estacionamiento: 5 cajones

Entrega: Acondicionado





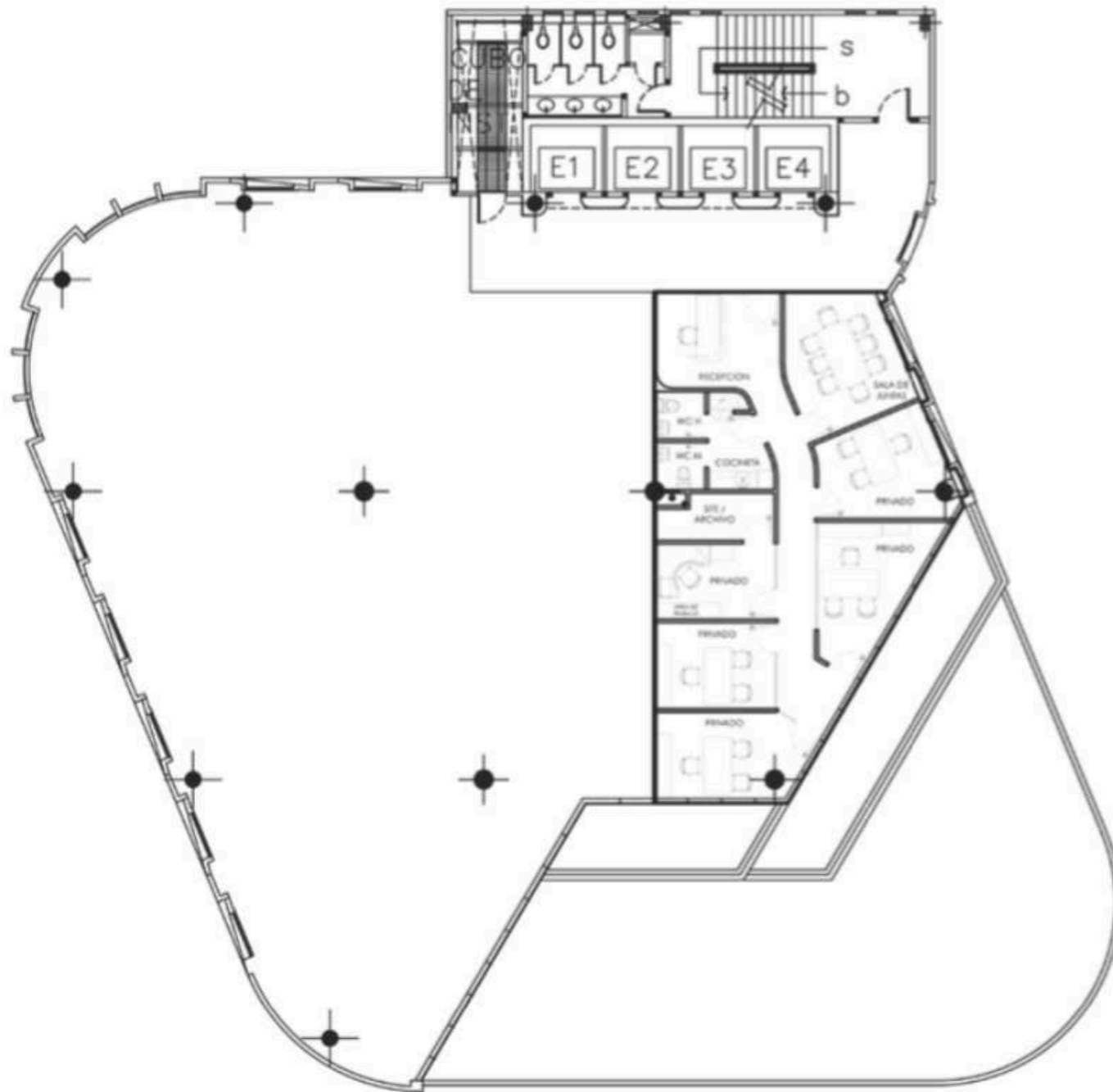












LAYOUT G





GROUNDWORK

by Lemancore

T. 83685070

info@lemancore.mx

www.lemancore.mx

Av Lázaro Cárdenas 1007, Residencial Santa Barbara,
66266 San Pedro Garza García, N.L.