


# GROUNDWORK

by Lemancore

LEMAN  
CORE

LEASE  
MANAGEMENT  
CORPORATE  
REAL ESTATE





# GROUNDWORK

**GROUNDWORK**

Nivel 6

Metros: 586 m<sup>2</sup>

Estacionamiento: 23 cajones

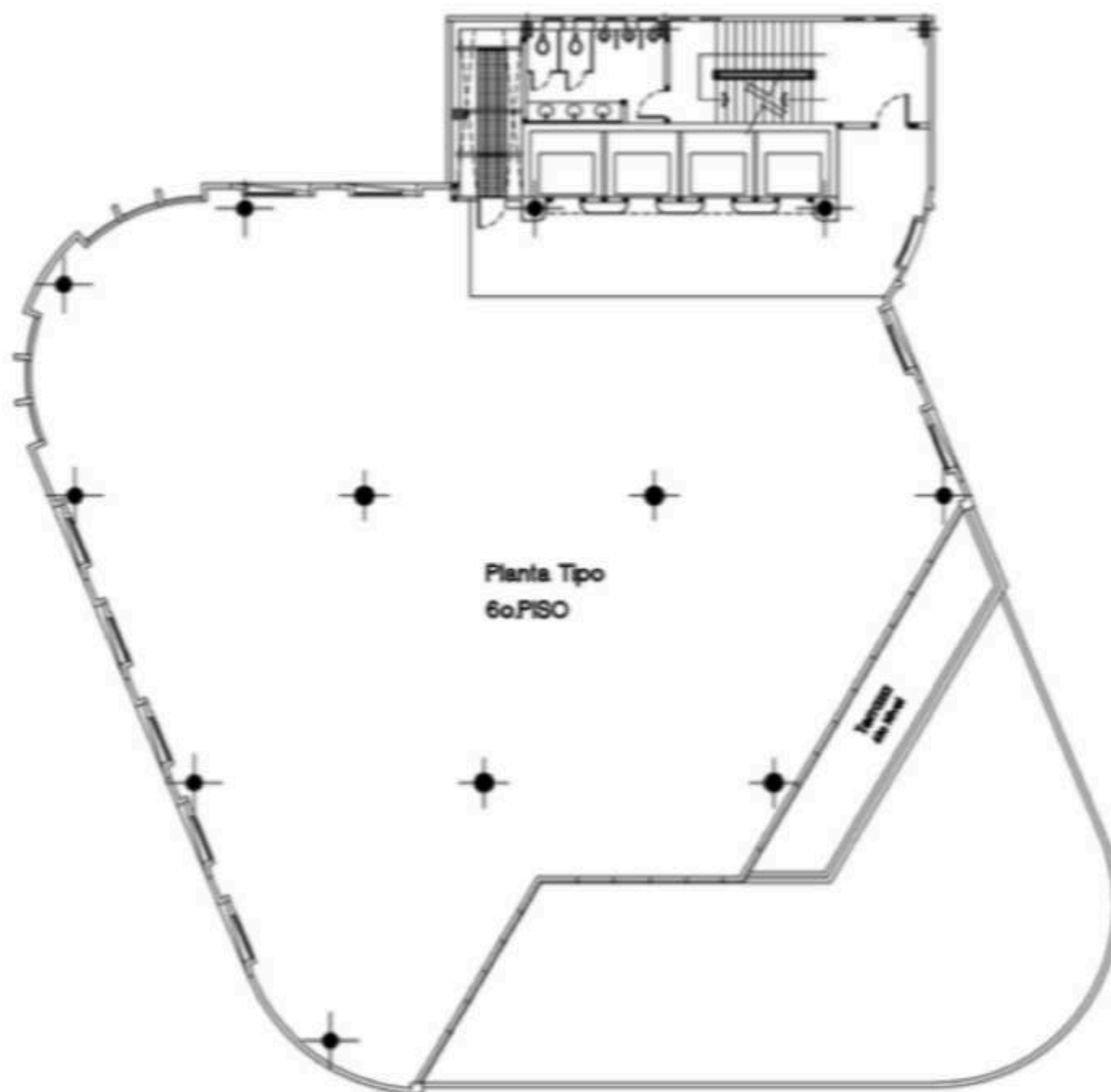
Entrega: Obra gris

# IBS

Piso 6



SECCION DE REFERENCIA



Planta Tipo  
6o.PISO

PLANTA TIPO  
4to Nivel





# GROUNDWORK

by Lemancore

T. 83685070

[info@lemancore.mx](mailto:info@lemancore.mx)

[www.wearegroundwork.com](http://www.wearegroundwork.com)

Av Lázaro Cárdenas 1007, Residencial Santa Barbara,  
66266 San Pedro Garza García, N.L.